

## 1.2 Meter T8 LED Tube



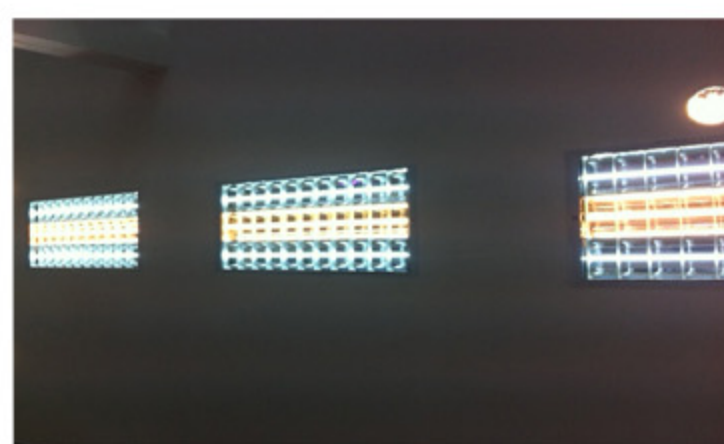
T8LED Tube - super bright, high CRI (Color Rendering Index) - is a modern indoor lighting product. Our LED tube adopts high quality LEDs as light source, and unique circuit controlling design, which contributes to high power converting efficiency.

When compared to conventional fluorescent lamps, Sheenly LED tube can save up to 65% energy. Moreover, its average life span is over 50,000 hours.

### Applications

Meets the general lighting environment such as:

- Office Lighting
- Warehouse
- Supermarket
- Restaurant and Club
- Subway station
- Underground car park



Brightness testing at ENGINEO shop

### Features

- Replace traditional fluorescent 36W
- Save up to 65% electricity compared to traditional lights which means 65% CO<sub>2</sub> reduction
- No UV or IR emissions and flicker free
- Conforming to International Standards
- Environmentally friendly - fully recyclable, no mercury or other hazardous materials
- Durable with life span over 50,000 hours
- High CRI 80+ and G13 base.

### Specification

Part Number	Dimension (mm)	LED Quantity	Color Temperature (K)	Brightness	Voltage (V)	Lumen Output (lm)	Beam Spread	Power Consumption (Watt)
XC-T08-18W-WW-AN	1199.4	276	3000-3300 (WW)	Normal	220VAC	1600	120°	18
XC-T08-18W-CW-AN	1199.4	276	5700-6000 (CW)	Normal	220V AC	1650	120°	18

REV 2.1

2009/8/13

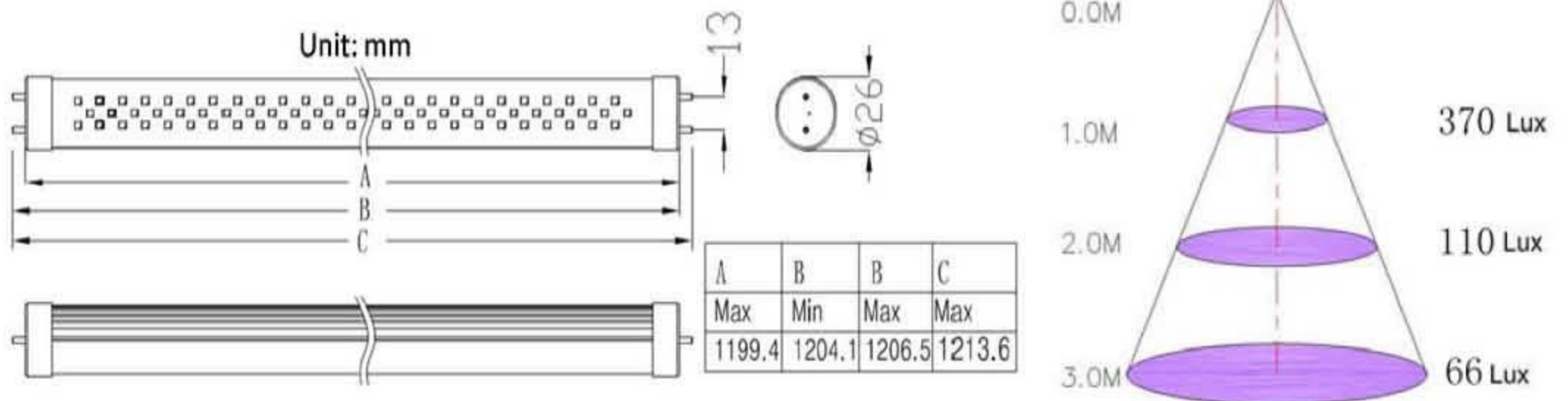


Contact : ENGINEO

80 Chang Phuck Road, Shiphoom, Muang, Chiang Mai, Thailand

www.engineo.co.th

## Dimension & Illuminance Diagram



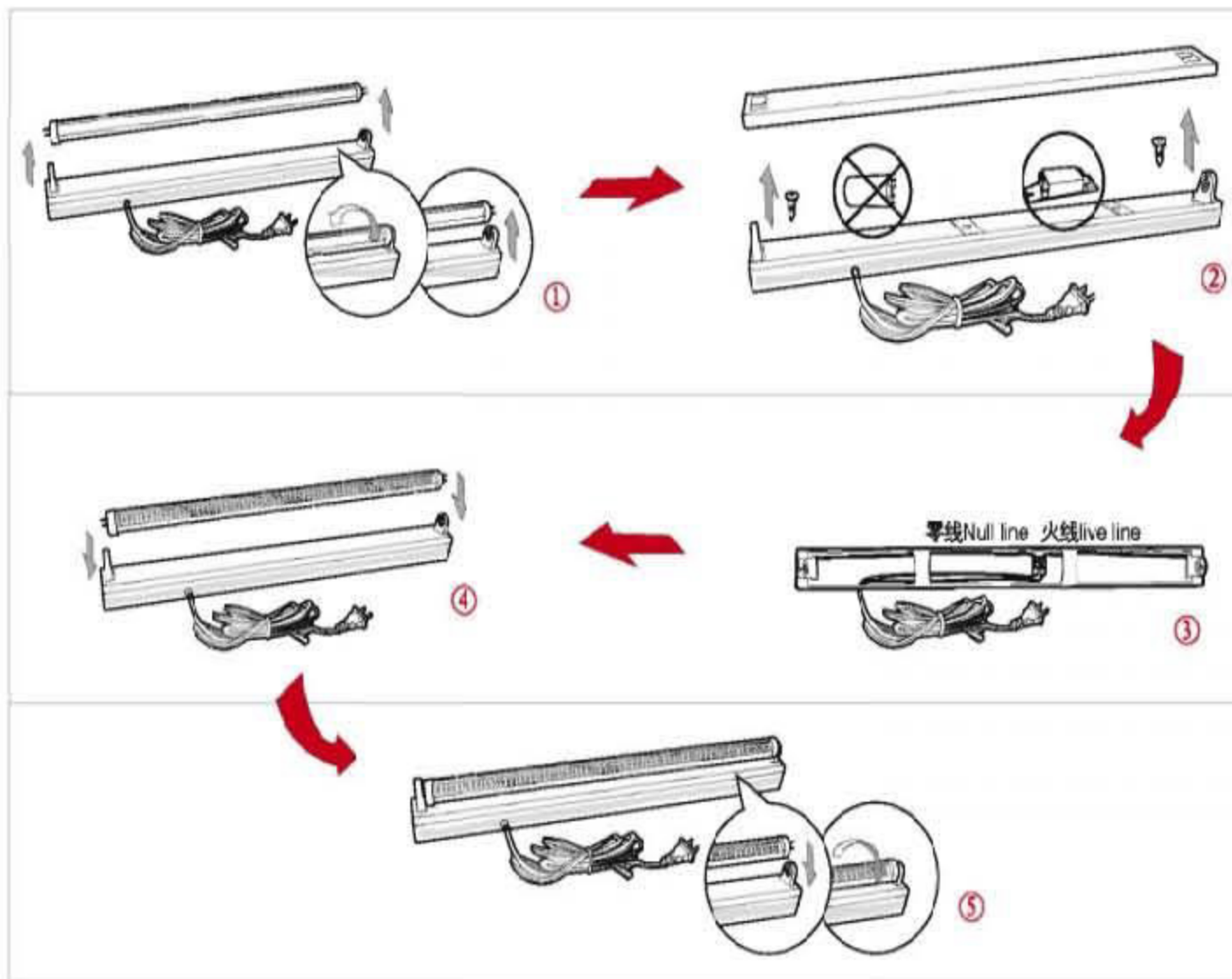
## Cautions

- Indoor use only
- Do not open - no user serviceable parts inside
- Refer to the installation guide

## Rated Life

50,000 hours (70% lumen maintenance at Ta = 25°C)

## Installation Guide



Step1, Turn off the power and remove the traditional tube from the light fixture.

Step2, Take out the starter and ballast from the light fixture.

Step3, Connect the AC live line and null line.

Step4, Install Sheenly LED tube into the fixture.

Step5, Screw the tube into position.